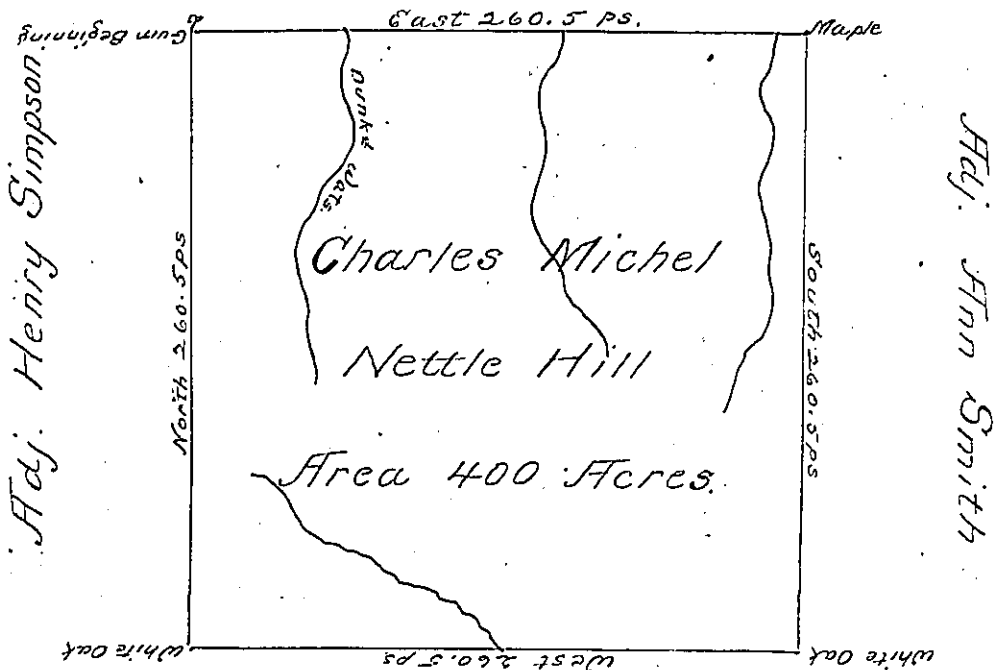


Adj. Benjn. McCulluck



Adj. Ferdinand Brant

The above is a Draught of a Survey made the Day of Febr. 1785 In pursuance of a warrant granted to Charles Michel dated the 25th. day of Octr. 1784 Situate on the Branch of <sup>Dunked</sup> Creek in Washington County called Nettle Hill containing four hundred acres with usual allowance of 6 per cent for Roads

Jno Hoge Ad.  
John Lukens Esqr Surv Genl.

IN TESTIMONY that the above is a copy of the original remaining on file in the Department of Internal Affairs of Pennsylvania, made conformably to an Act of Assembly approved the 16th day of February, 1833, I have hereunto set my Hand and caused the Seal of said Department to be affixed at Harrisburg, this second day of July 1901

*James W. Patton*  
Secretary of Internal Affairs.